

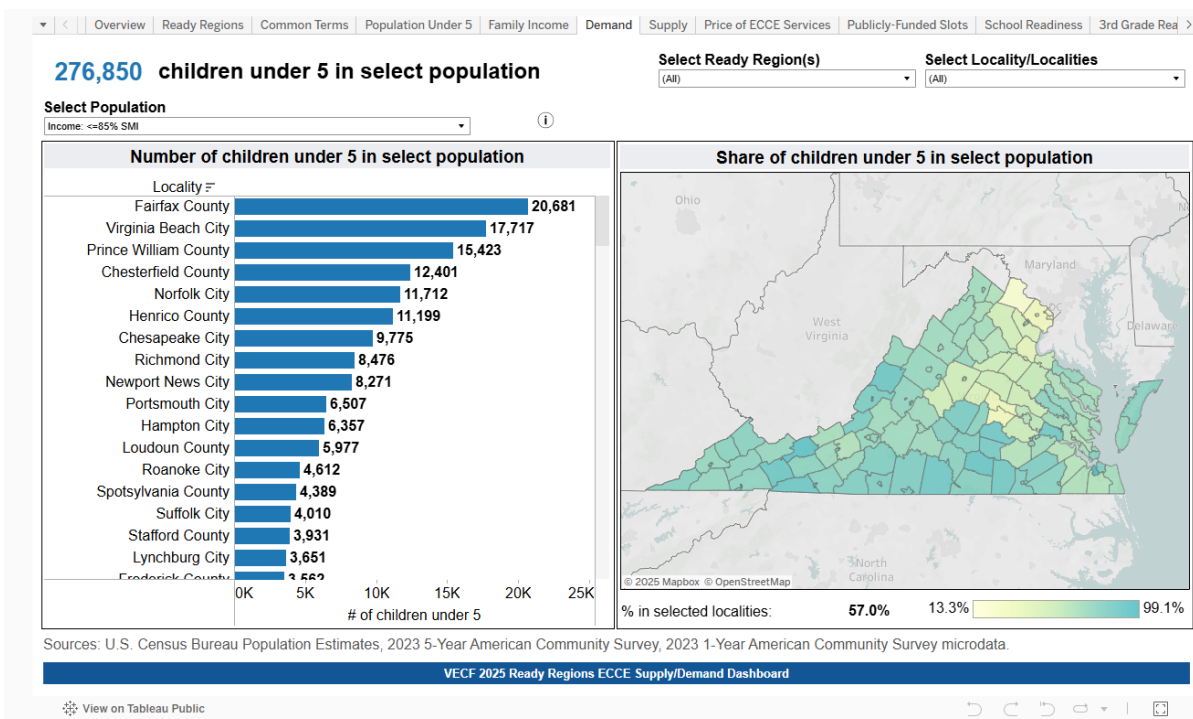
# READY REGIONS® ECCE Supply/Demand Dashboard

## How many children under 5 are eligible for publicly funded ECCE programs in Stafford, Fredericksburg, and Spotsylvania?

Children under 5 are income-eligible for publicly funded ECCE services in Virginia if they live in families with incomes at or below 85% of state median income (SMI). This represents the upper limit of eligibility for the Child Care Subsidy Program. Children in families earning above 85% SMI are not income-eligible for publicly funded ECCE services but may be eligible based on other eligibility criteria, such as regionally defined criteria or foster care status. It is not possible to estimate how many children may be eligible under these criteria.

To understand how many children are income-eligible for publicly-funded ECCE services in the localities of interest—in this example, Stafford, Fredericksburg, and Spotsylvania—do the following:

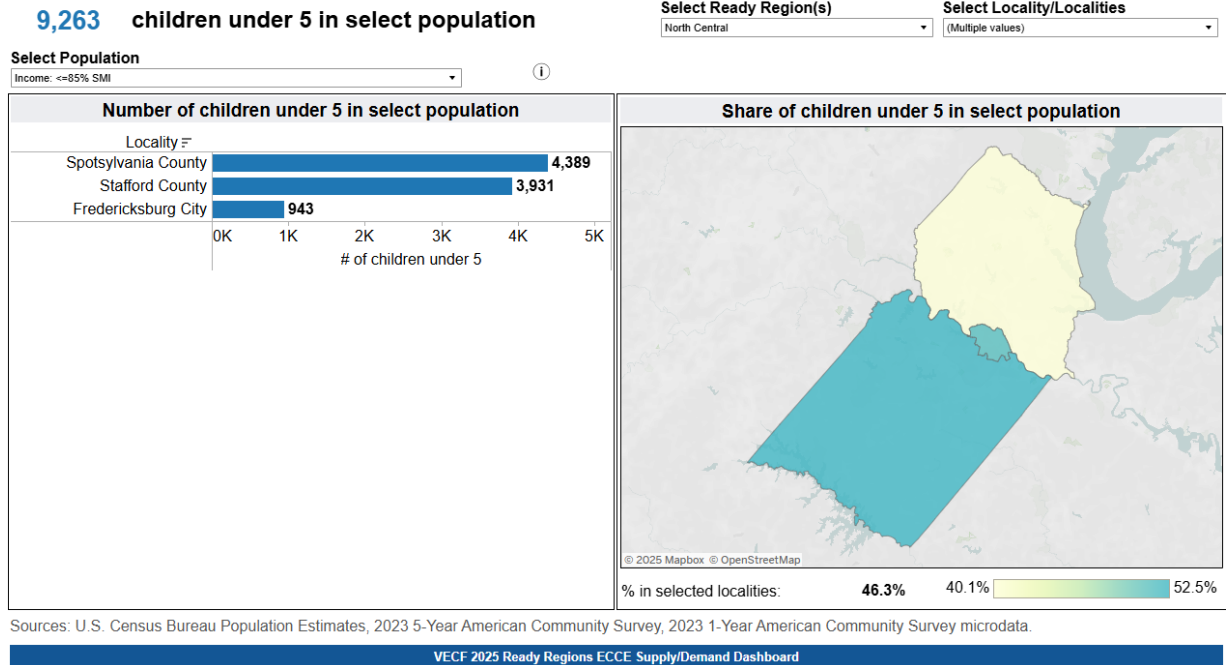
1. Navigate to the **Demand** tab of the dashboard. There are multiple potential measures for demand and the dashboard defaults to showing children in families at or below 85% SMI.



2. Use the **Select Locality/Localities** filter in the upper right corner to filter the dashboard to the localities of interest. First, uncheck “(All)”, then select the localities of interest – in this case, Stafford, Fredericksburg, and Spotsylvania.

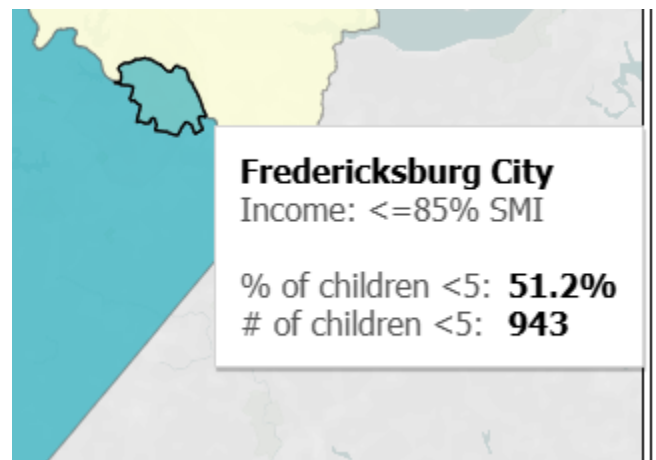
## HOW TO: Number of children <5 eligible for publicly funded ECCE | 2

This selection will automatically change the Select Ready Region(s) filter and the data shown in the charts and graphics.

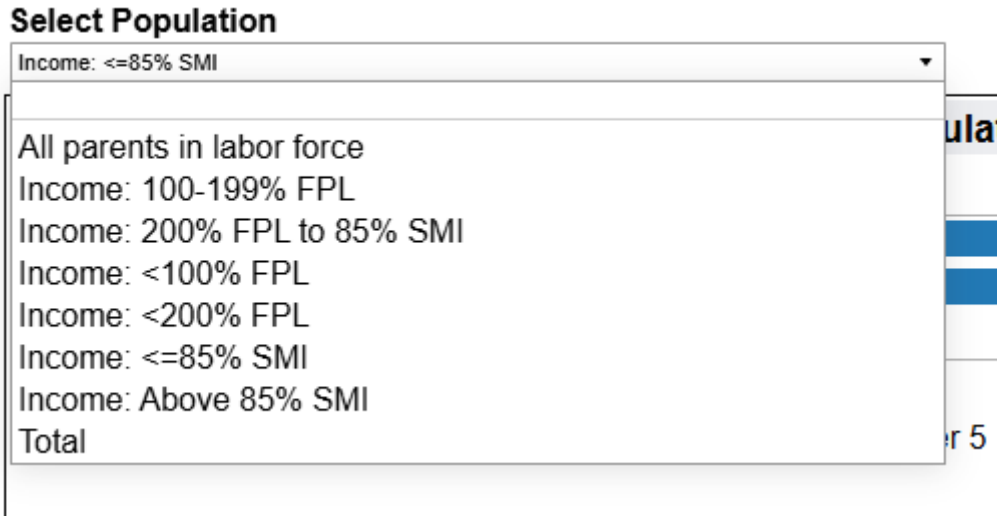


### 3. How to read the dashboard:

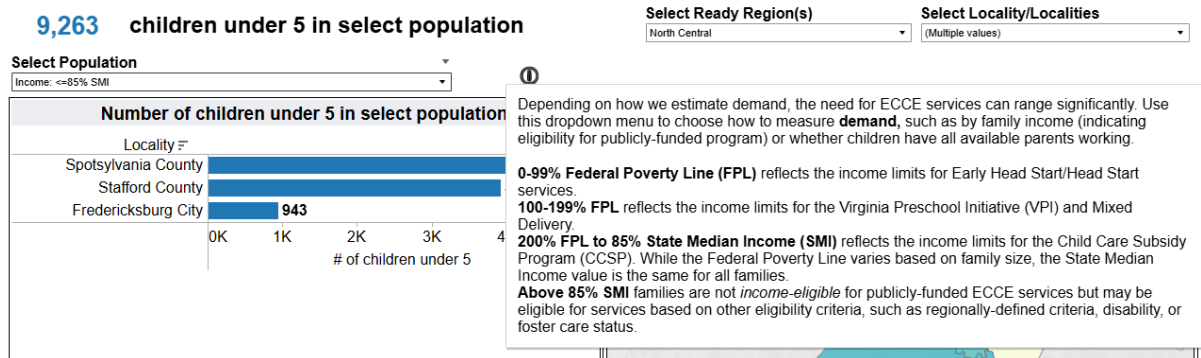
- The large number on the top left – **9,263** – indicates the total number of children under 5 in families with income at or below 85% SMI (this is the selected population).
- The bar chart on the left shows how many children in the selected population are in each of the three localities of interest: the largest number (4,389), for example, are in Spotsylvania County.
- The map on the right shows the share of children under age 5 that are income-eligible for publicly funded ECCE services. The color legend shows that this ranges from a low of 40.1% in Stafford to a high of 52.5% in Spotsylvania. The average for the three localities is shown in the bold number at the bottom of the map (46.3%). **To see details for any specific locality, hover over the locality shape** to see a tooltip with additional information.



- To change the measure of Demand—for example, to display only children in families with all available parents working—use the **Select Population** dropdown menu.

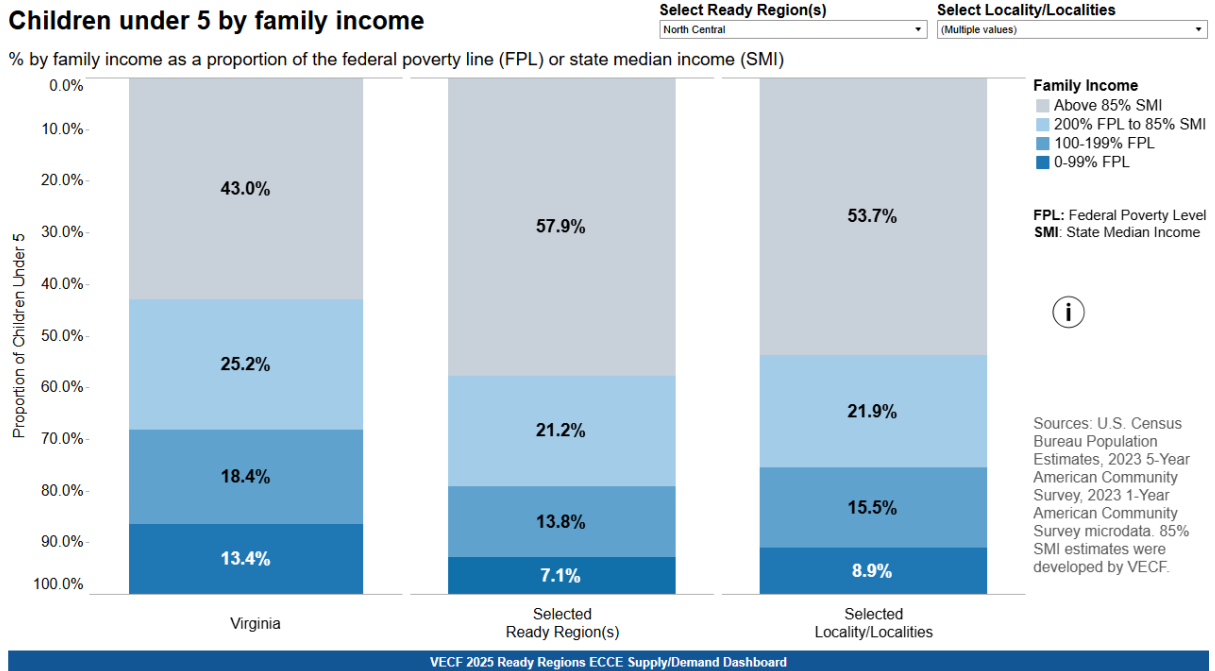


- To learn more about potential measures of demand and the rationale for the different income thresholds, **hover over or click on the information button** to the right of the Select Population dropdown menu.



- To understand how the distribution of children who are income-eligible for publicly funded ECCE services in the selected localities compares to their parent Ready Region(s) and the state, navigate to the **Family Income** tab. This displays three bars, one on the far left for Virginia, one in the middle for the selected Ready Region(s), and one on the far right for the selected locality or localities.

The screenshot below shows the data for Fredericksburg, Spotsylvania, and Stafford on the far right compared to Ready Region North Central (middle) and Virginia (left). The gray portion of the bar represents the share of children under 5 who are in families earning incomes above 85% SMI, meaning they are not income-eligible for publicly funded ECCE services.



This chart shows that a larger percentage of children in Ready Region North Central are not income-eligible for publicly funded ECCE than in Virginia overall (nearly 58% vs. 43% in the 2025 dashboard). Within Ready Region North Central, the three localities of interest—Fredericksburg, Spotsylvania, and Stafford—have a higher share of children who are income-eligible for publicly funded ECCE services. This is largely due to a greater share of children in families with incomes below the poverty line (8.9% vs. 7.1%) and children in families with incomes between 100-199% of the poverty line (15.5% vs. 13.8%) in these three localities compared to the Ready Region overall.